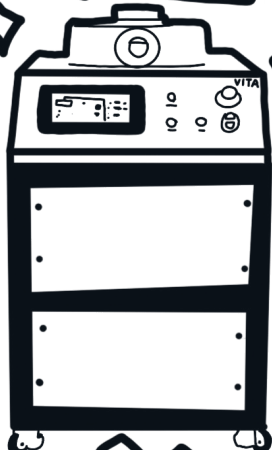


FEMTO SCIENCE

SURFACE MODIFICATION

Environment



ETCHING

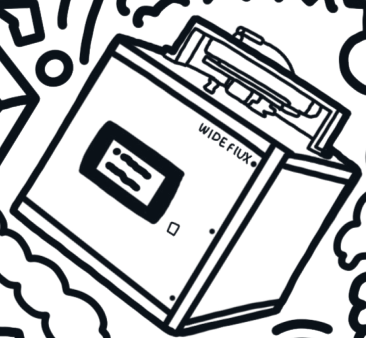
Plasma Pipette

NEW ENERGY

BIO-MEMS

2D-GRAPHENE

Parylene Coating



Plasma Pipette

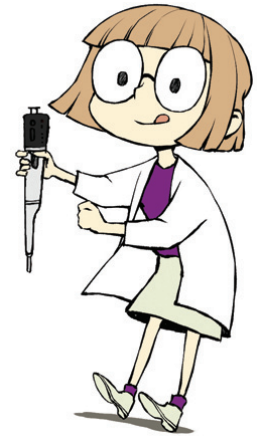


Specifications

Material	Plastic, Metal
AC Adapter Input	100-240V~50/60Hz 1.2A Max
Body size	52(W)x76(D)x270(H)mm
AC Adapter Output	5V, 4A
Box size	310(W)x80(D)x85(H)mm
Power Cable Length	260mm
Weight	375g

Preparation

1. Argon gas (required)
2. Regulator (required)
(range of gas pressure : 0.5~1.5bar)
4mm Extension tube is available
3. Extra-Extension tube (option)
Material : SUS or Teflon



Applications



Bio
&
Life Science

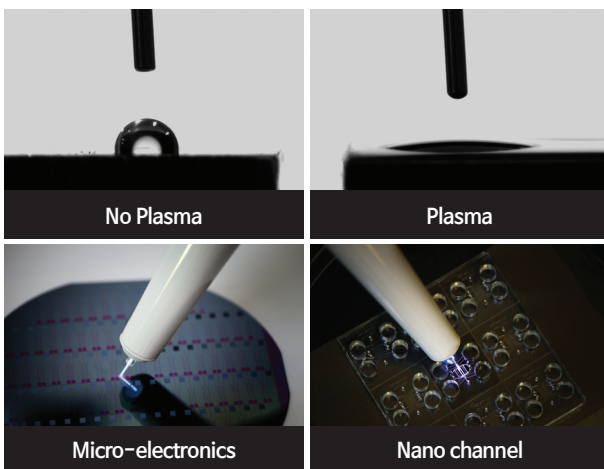
Agricultural
Engineering

Environmental
Engineering

Medical
Science

MEMS
Microelectronics

Chemical
&
Material



Time Layers	30 s	60 s	90 s	30 s	60 s	90 s
1						
2						
3						

▲ Plasma treatment on the spread bacteria covered by gauze

<특허 제 10-2106776호>



Femto Science Inc.

(18469) #505, Geumkang Penterium IT Tower, 557, Dongtangiheung-ro, Hwaseong-si, Gyeonggi-do, Republic of Korea

TEL +82-31-5183-4768 FAX +82-31-5183-4767 E-MAIL info@femtoscience.co.kr

www.plasmapiquette.com / www.femtoscience.co.kr