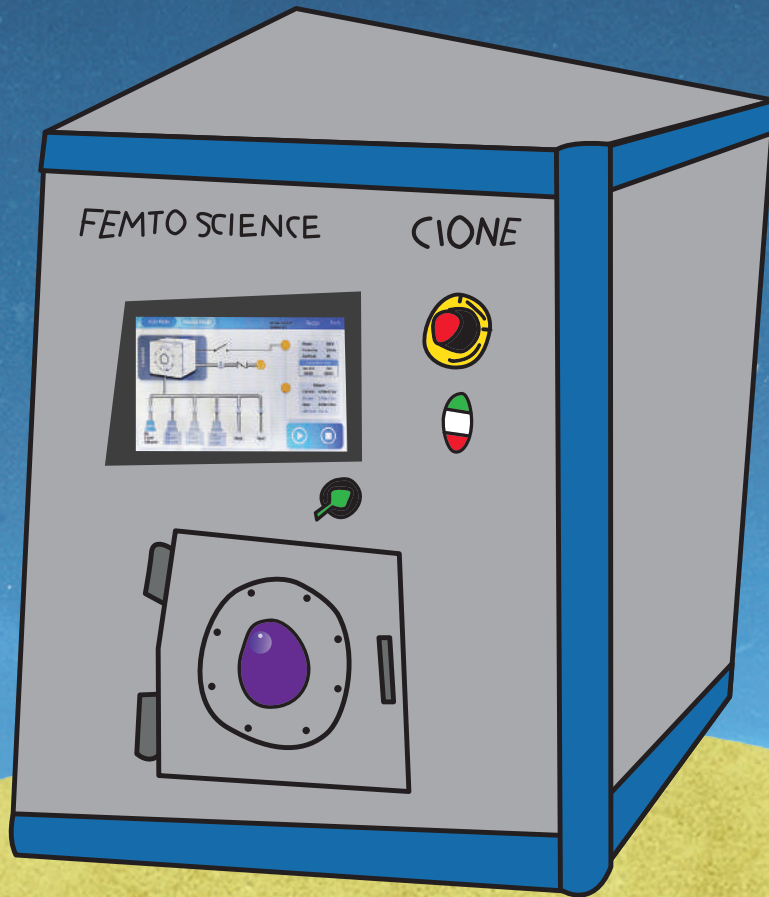




Plasma Processing System

CIONE-LF Series

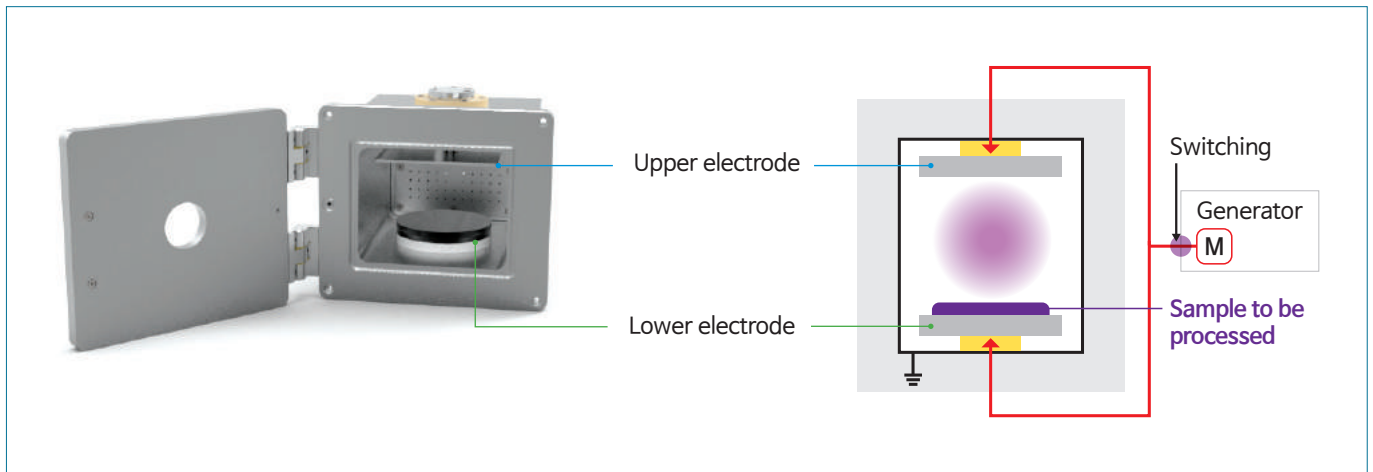




Specification

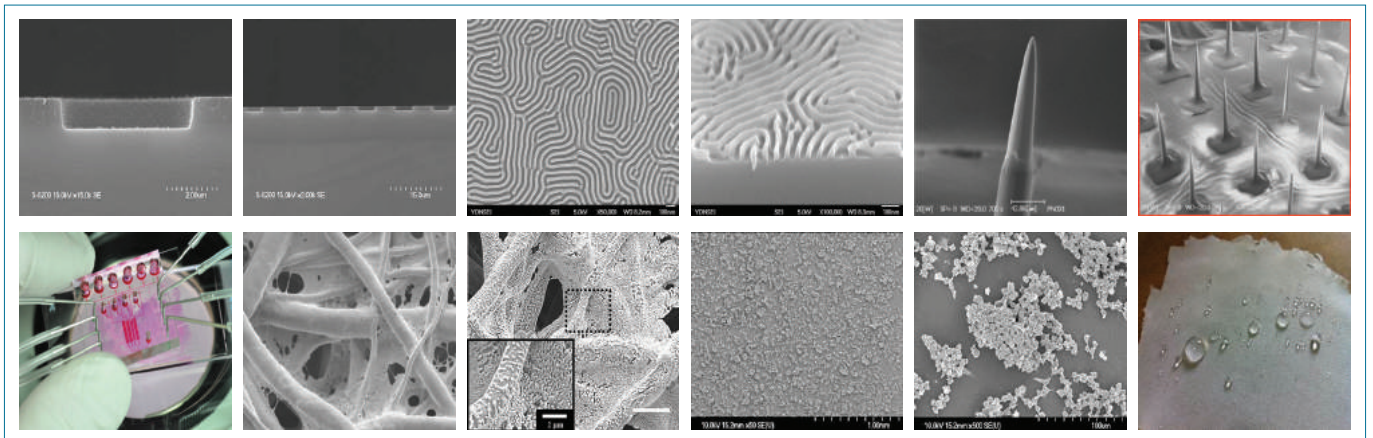
Model	CIONE4	CIONE6	CIONE8
Process Mode	PE/RIE MODE	PE/RIE MODE	PE/RIE MODE
Chamber	W.140 x D.200 x H.110 (mm)	W.200 x D.220 x H.160 (mm)	W.250 x D.300 x H.200 (mm)
Generator	20~100kHz Max. 100W	20~100kHz Max. 200W	20~100kHz Max. 300W
MFC	Max. 100 sccm	Max. 200 sccm	Max. 500 sccm
Gauge Pressure	Atm ~ 5×10^{-4} Torr	Atm ~ 5×10^{-4} Torr	Atm ~ 5×10^{-4} Torr
Operation	Manual & Automatic	Manual & Automatic	Manual & Automatic
Geometry	W.440 x D.500 x H.560 (mm)	W.510 x D.525 x H.640 (mm)	W.600 x D.615 x H.680 (mm)

PE & RIE Mode



* User can select either PE mode or RIE mode for process purpose

Applications



Femto Science Inc.

#505, Geumkang Penterium IT Tower, 557, Dongtangiheung-ro, Hwaseong-si, Gyeonggi-do, Republic of Korea

TEL +82-31-5183-4768

FAX +82-31-5183-4767

E-MAIL info@femtoscience.co.kr

www.femtoscience.co.kr